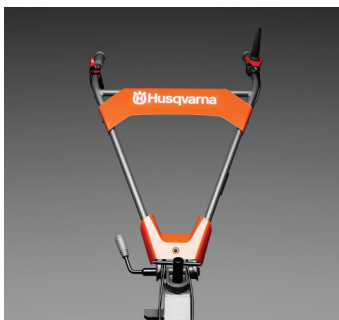




HUSQVARNA TF 545P

A tough, powerful tiller that gives you reliability, efficiency and long-lasting Husqvarna durability. Easy-starting petrol engine with oil bath air filter ensures long service life, even when used in dry, dusty environments – while the fully sealed transmission (with direct clutch, two forward speeds and one reverse) means it's also perfectly suited to the wet. A wide range of useful accessories connected via the AUX PTO make it a truly versatile machine.



Adjustable handlebar

Adjustable handlebar for best working position.



Husqvarna gasoline engine

Powerful and reliable husqvarna gasoline engine.

AUX PTO

The Aux Pto give you the option to connect a pump, generator, or sprayer to be powered by your tiller. This makes the machine even more versatile.



Reversible handlebar

The reversible handlebar allows use of both front- and rearmounted accessories

FEATURES

- The Aux Pto give you the option to connect a pump, generator, or sprayer to be powered by your tiller. This makes the machine even more versatile.
- Powerful and reliable husqvarna gasoline engine.
- Adjustable handlebar for best working position.
- Reversible handlebar allows use of both front- and rearmounted accessories
- The bumper will protect the engine in use or during transportation. It can also serve as lifting handle.
- The wheel kit allows you to use accessories or move the product in an efficient way.

Technical Specifications	
CAPACITY	
Net power at preset rpm	3600 rpm
Net power at preset rpm Energy	5 kW
Power output	5 kW
Rotational speed (min/max) max	145 rpm
Rotational speed (min/max) min	63 rpm
DIMENSIONS	
Article gross weight	136000 g
Article net weight	124000 g
Tine diameter	360 mm
Weight	113 kg
Working depth	30 cm
Working width	110 cm
ENGINE	
Cylinder displacement	270 cm ³
Engine brand	Husqvarna
Engine name	Husqvarna Engine
Transmission steps forward	4
Transmission steps reverse	2
Transmission type	Direct Clutch
Transport wheel/s	2
Fuel tank volume	6 l
Fuel tank volume	1.59 gal (US)
EQUIPMENT	
Cultivator type	Front-tine
Drag bar	Yes
Foldable handlebar	Yes
Handlebar-mounted gear selection	No
Horizontally adjustable handlebar	Yes
Plant guards	No
Reverse gearbox	Yes
Rubber wheels	Included
Transport wheel/s	2
Vertically adjustable handlebar	Yes
LUBRICANTS	
Fuel consumption	395 g/kWh
Fuel tank volume	6 l
Power/fuel type	Gasoline
MATERIALS	
Master pack: Paper + Cardboard	0 g
Metal total	0 g
Paper + Cardboard total	0 g
PE total	0 g
PET total	0 g
Plastic foil	0 g
Plastic rigid	0 g
Plastic total	0 g
PS/EPS/HIPS total	0 g
SOUND AND NOISE	
Sound power level, guaranteed (LWA)	102 dB(A)
Sound power level, measured	100 dB(A)
Sound pressure level at operators ear	80 dB(A)
PACKAGING	
Packaging height	690 mm
Packaging length	1030 mm
Packaging width	850 mm
Quantity in Master pack	1

ACCESSORIES



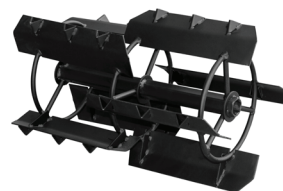
HUSQVARNA PLOUGH
501 65 29-01



HUSQVARNA RIDGER - EMM
501 65 37-01



HUSQVARNA METAL WHEEL KIT -
EMM
501 65 42-01



HUSQVARNA PADDY WHEEL KIT -
EMM
501 65 45-01



HUSQVARNA CONNECTING
BRACKET B-TYPE
588 26 60-01



HUSQVARNA POTATOES
HARVESTING PLOUGH
588 26 63-01



HUSQVARNA DITCHING BLADE
588 26 64-01



PLOUGH
588 26 67-01



HUSQVARNA WATER PUMP
589 52 72-01



HUSQVARNA WATER PUMP
589 52 72-02



HUSQVARNA SPRAYER
589 52 76-01



HUSQVARNA SWATHER
ATTACHMENT
590 36 60-01